

Guardianship Fees Schedule	WeCare University	WeCare Holiday A	WeCare Gold	WeCare A+	WeCare A++
Reg Fee	£90	£90	£90	£180	£180
Service Fee	£1,215 /yr	£200 / wk	£1,215 /yr	£3,595 /yr	£4,595 /yr
Communication Language	English	English	English	English	English

Statutory Requirements					
24/7 emergency line	✓	✓	✓	✓	✓
Official letters	✓	✓	✓	✓	✓
Student wellbeing check up	✓	✓	✓	✓	✓
Emergency services*	✓	✓	✓	✓	✓

Hosting					
Homestay**	✓	✓	✓	✓	✓
Transfers***	✓	✓	✓	✓	✓

Correspondence					
With boarding staff				✓	✓
With school office				✓	✓
Between school and family				✓	✓

Relationships					
WhatsApp / WeChat / LINE groups		✓	✓	✓	✓
Annual student event				✓	✓
In-person visits (upon request)					once per term

Purchases On Behalf of Parents					
Everyday essentials					✓
Birthday cake					✓
Termly statement					✓

CV Booster					
Communication with academic faculty					✓
Progress consultation with school					✓
In-school academic subject advisory					✓
Supra-curricular activity advisory					✓
University application advisory					✓
External booster class / camp advisory					✓
U.K. in-country work experience advisory					✓
CV/persona curation					✓

Emergency services*

Are activated in scenarios including but not limited to the following

- student rushed to the hospital and school requests the educational guardian to be present to act on behalf of parents
- student asked to leave school temporarily because of illness
- student suspended from school temporarily as disciplinary measure

Homestay**

For all students requiring hosting

- homestay accommodation starts from £80 per day

Transfers***

For all students requiring transportation

- taxi transfer is at cost

WeCare A++

Year 9

- Relationship building with house parents, form tutor, subject teachers, head of year
- Regular meetings to discuss progress
- Academic mentoring
- Extracurricular guidance and mentoring
- Scholarship (academic, music, sports, art) mentoring
- GCSE selection guidance

Year 10

- Relationship building with house parents, form tutor, subject teachers, head of year
- Regular meetings to discuss progress
- Academic mentoring
- Subject guidance / competitions
- Extracurricular guidance and mentoring
- Scholarship (academic, music, sports, art) mentoring

Year 11

- Relationship building with house parents, form tutor, subject teachers, head of year
- Regular meetings to discuss progress
- Academic mentoring
- Subject guidance / competitions
- Extracurricular guidance and mentoring
- A-level / IB subject selections
- Additional revision support and guidance
- CV creation and work guidance
- Summer working experience

Year 12

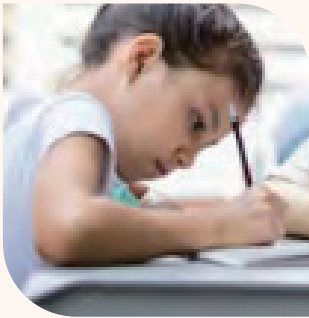
- Relationship building with house parents, form tutor, subject teachers, head of year
- Regular meetings to discuss progress
- Academic mentoring / Subject support
- Additional revision support and guidance
- PS consultation / CV update and guidance
- University selection consultation
- University admissions tests guidance

Year 13

- Relationship building with house parents, form tutor, subject teachers, head of year
- Regular meetings to discuss progress
- Academic mentoring
- Additional revision support and guidance
- Clearing guidance and applications
- Gap year guidance and recommendations
- A-level / IB prediction upgrade negotiation



With you through every step of your UK education





Student Fund Expenses Schedule



- For WeCare A++ and WeCare A+ students, an initial student fund of £1,500 is required to cover the first academic term's school break accommodation and transfers
- For WeCare Gold students, an initial student fund of £500 is required as an emergency fund during the guardianship

For ALL students

- Chaperone student, including travel times, weekday £120 half day (4 hours), £200 full day (8 hours); weekend £180 (half day), £240 (8 hours); if required, chaperone's transport and accommodation costs are at cost
- Arrangement of family visit transfer, £25 per ride

For WeCare Gold , WeCare Holiday A and University students

Student visit	£180 per visit, taxi at cost
Arrangement of homestay accommodation	£150 per one duration, accommodation at cost
Arrangement of taxi transfer	£25 per ride, taxi at cost
Arrangement of course, camp or tutoring	£150 per booking, programme at cost
Attending parents' meeting and providing written meeting report	£360 per meeting, taxi at cost or £180 per online meeting



Service Scope Definition

Statutory Conditions

- 24/7 emergency line** : a dedicated mobile phone line to receive emergency calls on standby
- Official letters** : necessary for schools to formally enrol students, UKVI to issue visa and border forces to allow student's entry to the U.K.
- Student wellbeing check up** : contact with students by phone or messaging service
- Emergency services** : activated in scenarios including but not limited to the following
 - student rushed to the hospital and school requests the educational guardian to be present to act on behalf of parents
 - student asked to leave school temporarily because of illness
 - student suspended from school temporarily as disciplinary measure

Hosting

- Homestay** : suitably matched host families up to 2-hour travel time from student's school location is guaranteed, meeting stringent safe recruitment requirement as per AEGIS policy
- Transfers** : all individual drivers and transport company personnel are background checked and familiar with transporting minors
- Priority is reserved for WeCare A++ and WeCare A+ students when it comes to host family and driver allocation. Pending on availability, WeCare A++ and WeCare A+ students have the option to stick to a dedicated host family and driver for the whole academic year

Correspondence

- With boarding staff** : including but not limited to arranging exeat/half term/term start and end logistics, discussing matters related to student's pastoral wellbeing
- With school office** : including but not limited to requesting for early leave and late return, booking activities, authorising consents, giving notices, purchasing school photos and uniforms
- Between school and family** : including but not limited to all of the above, and fees payment and deposit return monitoring, medical and vaccination record keeping, progress report and parents' acknowledgement forwarding, school portal monitoring (provided parents grant UKG access)

Purchases On Behalf of Parents

- Everyday essentials** :
If required, buying school- and boarding-related essential daily items online and delivering them to boarding house directly. We reserve the right to provide this service only when there are enough funds in the student account. For students wishing to take up this service, we require £2,000 in the student fund instead of the usual £1,500
- Birthday cake** :
If required, buying birthday cake and other care packages online upon the parents' request and delivering them to boarding house directly. For students wishing to take up this service, we require £2,000 in the student fund instead of the usual £1,500
- Termly statement** :
Providing WeCare A++ students student fund statement at the end of each academic term



Relationships

- WhatsApp / WeChat / LINE** : We create a communication group for each student's family, ensuring smooth communication
- Annual student events** : we run ad-hoc annual student gatherings, including but not limited to Spring Festival, Dragon Boat Festival, Mid-Autumn Festival gatherings. Priority is reserved for WeCare A++ and WeCare A+ students. Only when spaces remain will events open to WeCare Gold students
- In-person visits (upon request)** : We can arrange for the Head of Education to attend a parent-teacher conference, or for the Head of Pastoral Care to accompany the student for tasks such as opening a bank account. Transportation costs will be charged separately. This service is available once per term.

CV Booster



Communication with academic faculty
Changing subjects, arranging extra classes, intervening on behalf of parents when student performance shows points of concern



Progress consultation with school
Conducting in-person meeting with school's head of year and subject teachers, either at school or online



In-school academic subject advisory
Recommending students on choosing the right subjects that align with future university and career goals



Supra-curricular activity advisory
Recommending students to take on activities, competitions and community services that add value to future university and career applications



University application advisory
Preparation for U.S. universities start from Year 9; preparation for U.K. universities start from Year 10



External booster class/camp advisory
If required, recommending and arranging additional out-of-school classes and holiday camps to enhance the students' learning experiences



U.K. in-country work experience advisory
Highly recommended to students looking to enter medicine, dentistry, veterinary science, architecture, law and engineering for the purpose of increasing competitiveness when it comes to university applications



CV/Persona curation
Helping students to define their strengths and competence and documenting their development since day one of arriving in the boarding school for the purpose of standing out among competitors when it comes to university applications